

7	101-05-900-R5	FPH-Hook-R5	1
6	101-05-901-R5	1/4-20 Threaded Knob	1
5	101-05-600-R5	FPH-Center Plate-R5	1
4	101-05-902-R5	PVC End Caps	4
3	101-05-801-R5	FPH-Front Plate-R5	1
2	101-05-800-R5	FPH-Back Plate-R5	1
1	101-05-802-R5	FPH-Steel Support Ring	1
No.	Drawing No.	Description	Qty.

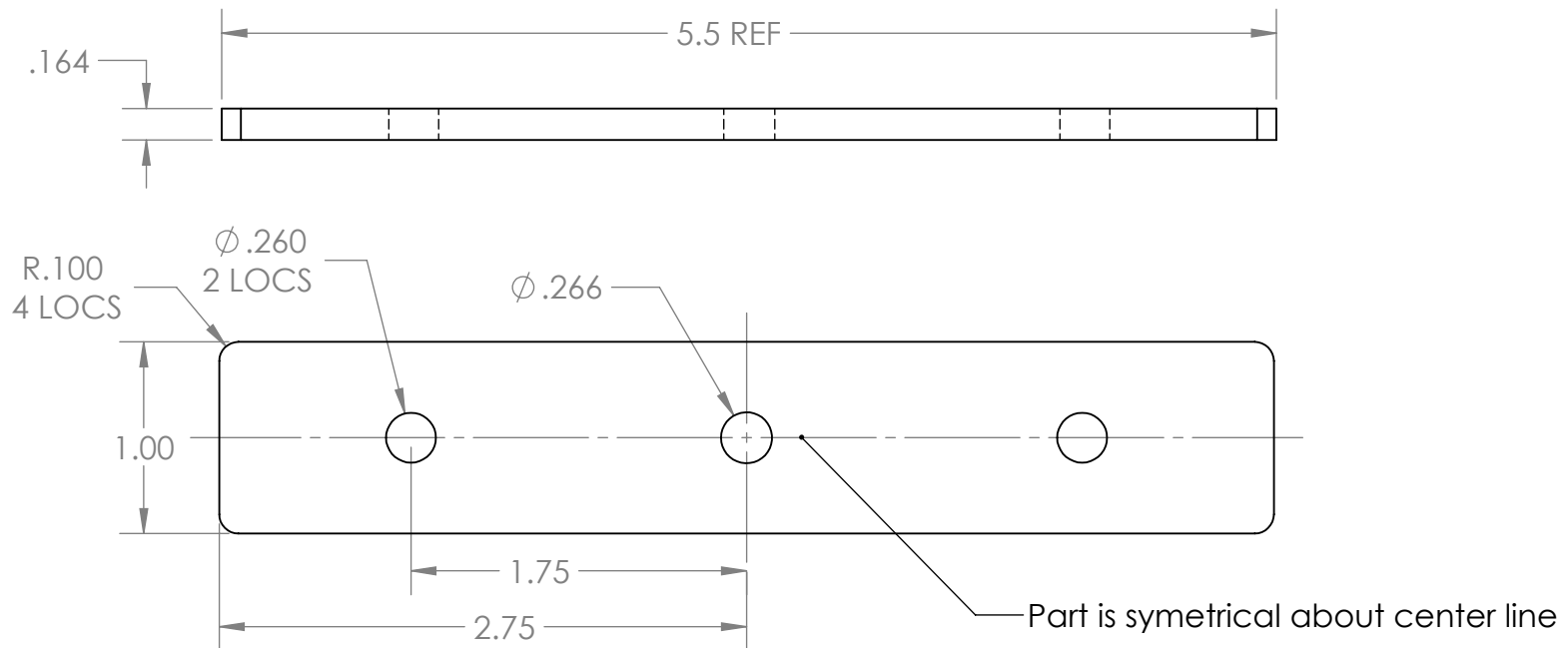
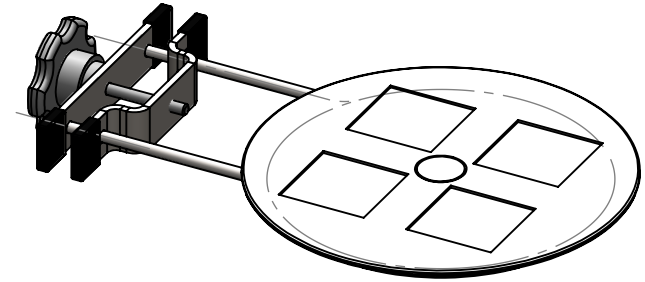
Material:	Heat/Treat:	Finish:	Eng. Initial:	Date: 2012-12-27
	Customer No:	Customer Ref:	Qty:	Scale: 1:1
GLI Approval Comments:	GLI Initials: TBD	GLI Date: 2012-12-27	Sheet No: 1	No. of Sheets: 8

Title:

Part No:

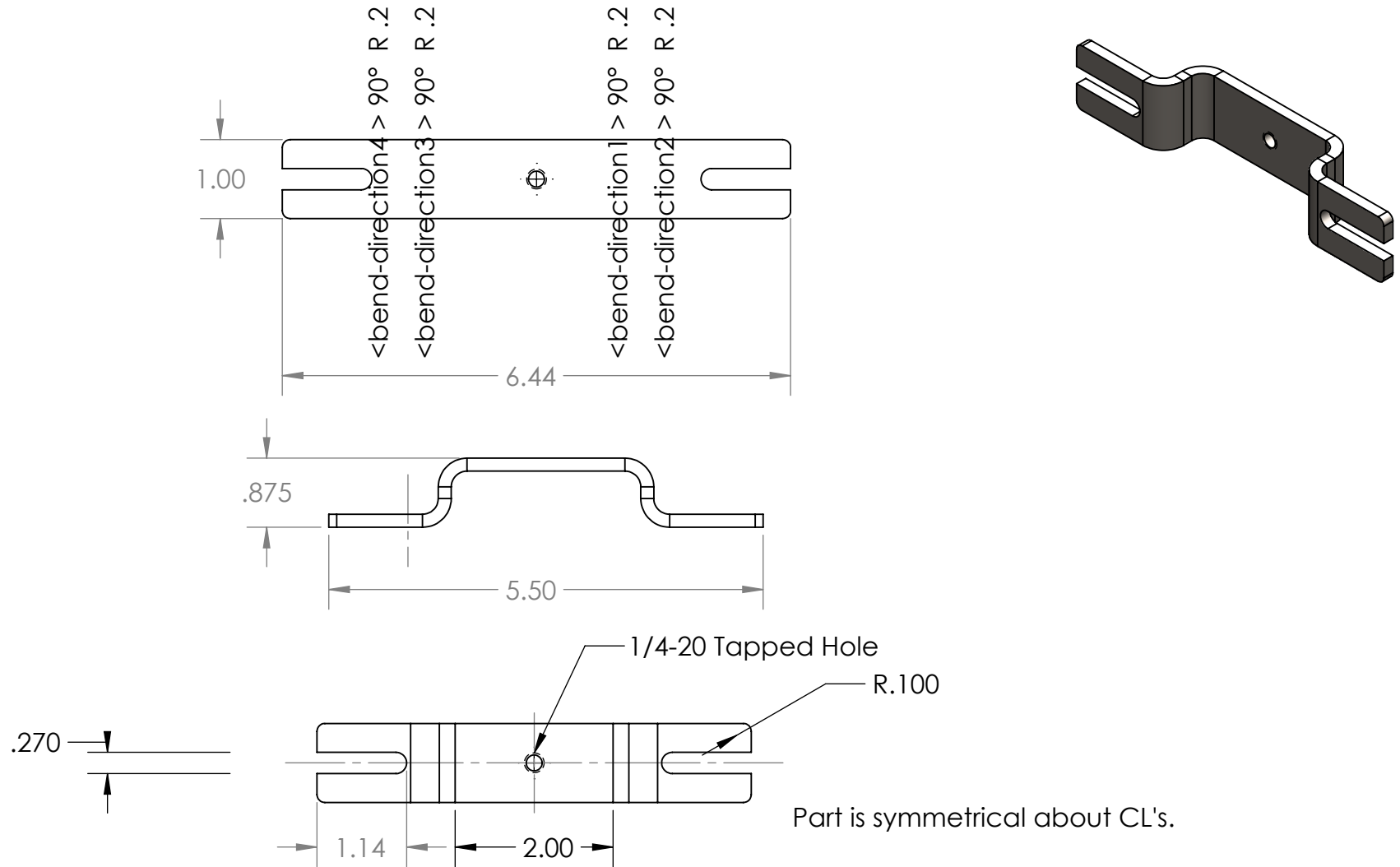
Drawing No:
Flower Pot Holder - R5





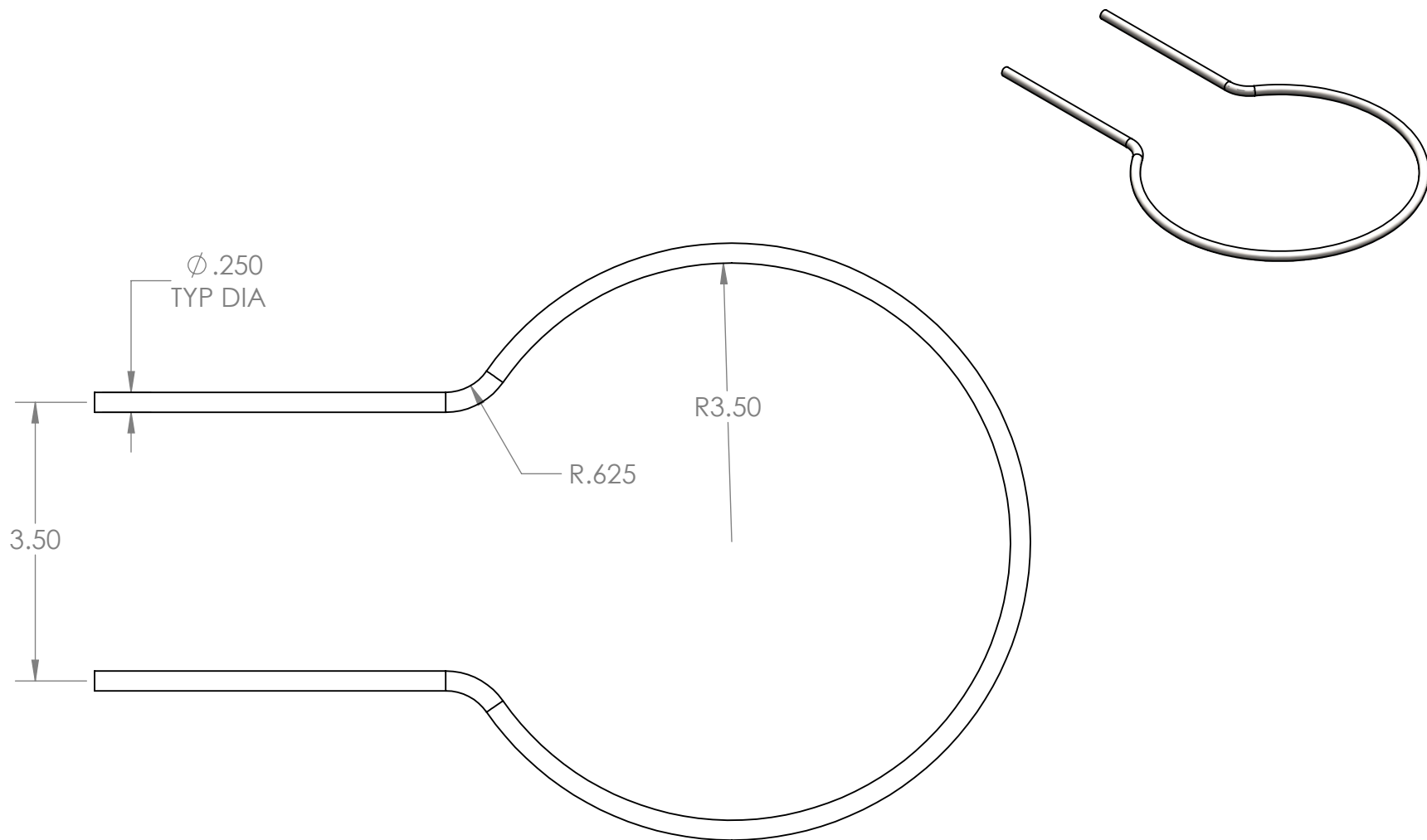
Material: AISI 1020 Steel, Cold Rolled	Heat/Treat: NR	Finish: PC Black	Eng. Initial: TBD	Date: 2012-12-27	Part Name: FPH-Back Plate-R5
	Customer No: X	Customer Ref: GL	Qty: 1	Scale: 1:1	Part No: 101-05-800
GLI Approval Comments: TBD	GLI Initials: TBD	GLI Date: 2012-12-27	Sheet No: 2	No. of Sheets: 8	Drawing No: 101-05-800-R5





Material: AISI 1020 Steel, Cold Rolled	Heat/Treat: NR	Finish: TBD	Eng. Initial: TBD	Date: 2012-12-27	Part Name: FPH-Front Plate-R5
	Customer No: X	Customer Ref: TBD	Qty: 1	Scale: 1:1	Part No: 101-05-801-R5
GLI Approval Comments: TBD	GLI Initials: TBD	GLI Date: 2012-12-27	Sheet No: 3	No. of Sheets: 8	Drawing No: 101-05-801-R5

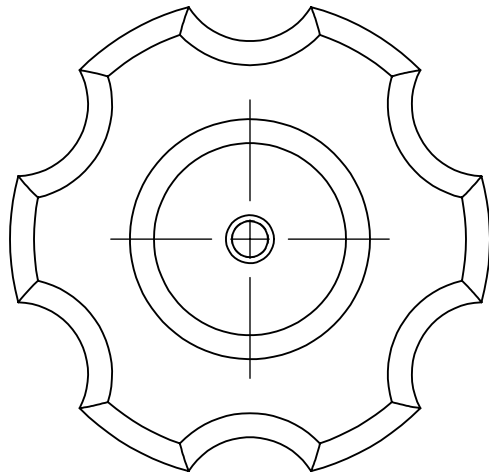
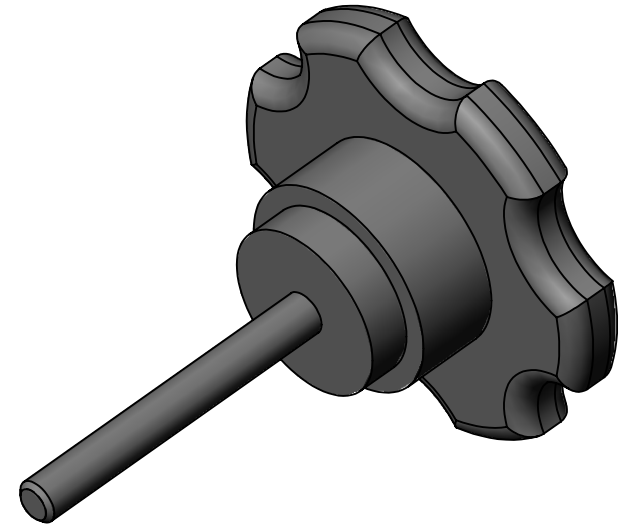
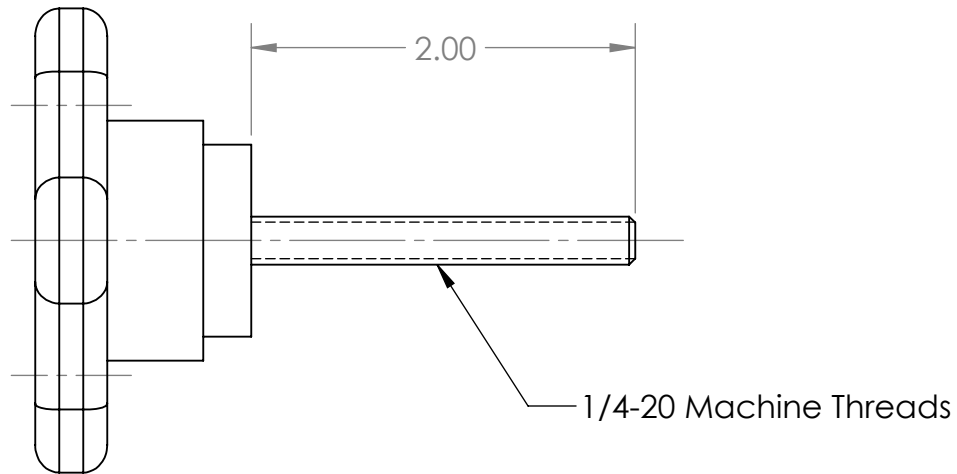




Unformed wire length = 28.625"

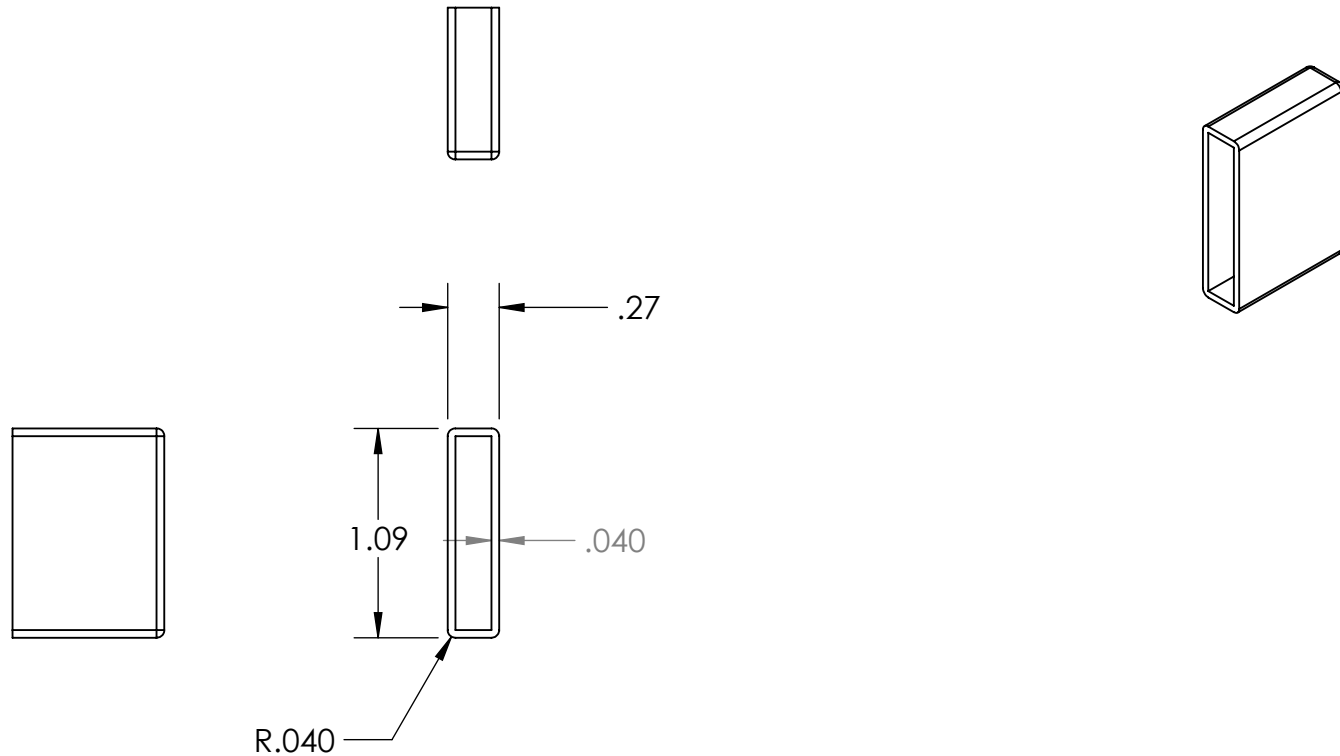
Material: AISI 1020	Heat/Treat: NR	Finish: PC Black	Eng. Initial: no	Date: 2012-12-27	Part Name: FPH-Steel Support Ring
	Customer No: 101	Customer Ref: GLI	Qty: 1	Scale: 1:1	Part No: 101-05-802
GLI Approval Comments: Pending	GLI Initials: TBD	GLI Date: 2012-12-27	Sheet No: 4	No. of Sheets: 8	Drawing No: 101-05-802-R5





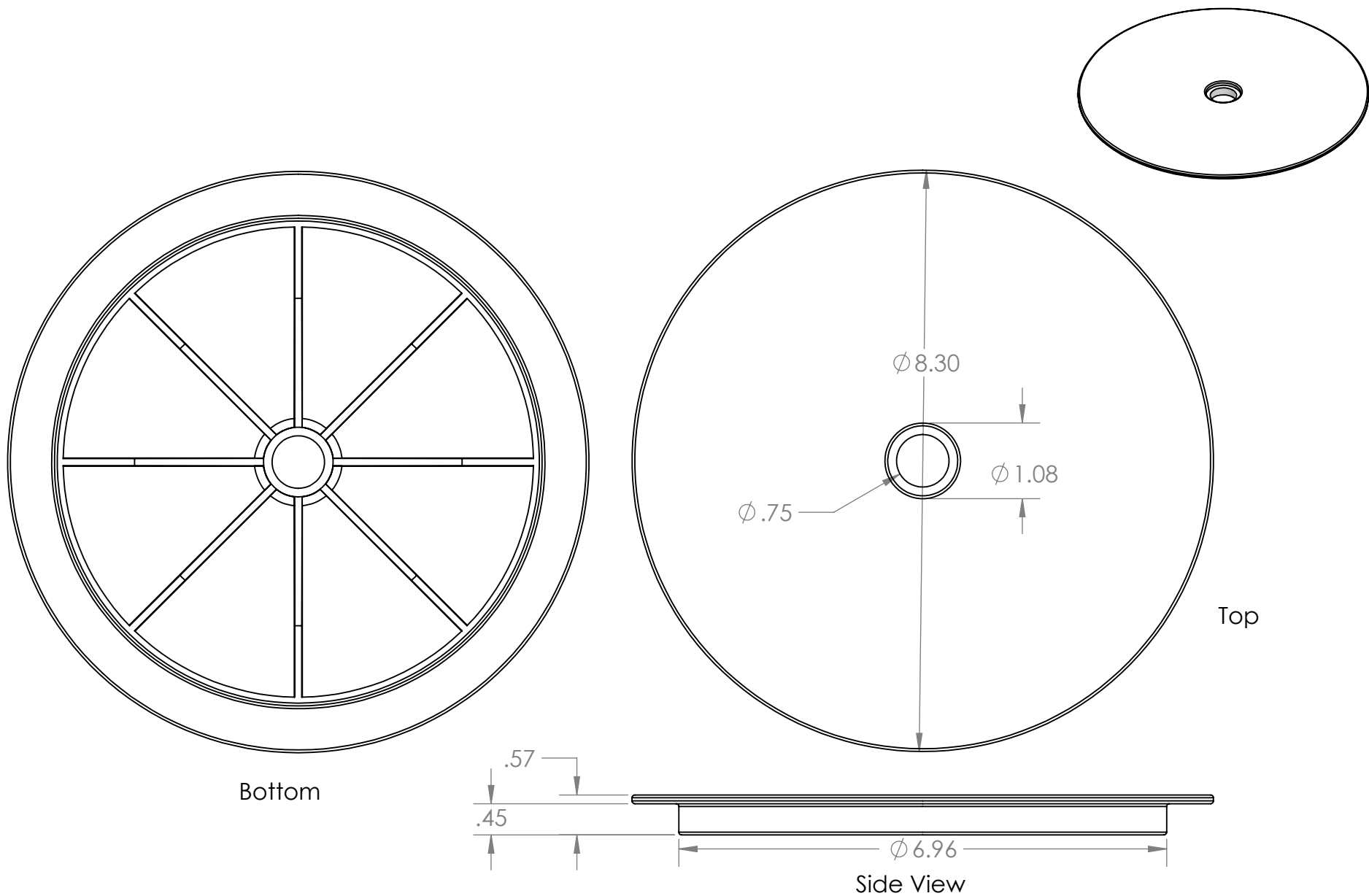
Material: Plastic and Steel	Heat/Treat:	Finish:	Eng. Initial:	Date: 2012-12-27	Part Name: 1/4-20 Threaded Knob
	Customer No:	Customer Ref:	Qty:	Scale: 1:1	Part No: 101-05-901
GLI Approval Comments:	GLI Initials: TBD	GLI Date: 2012-12-27	Sheet No: 5	No. of Sheets: 8	Drawing No: 101-05-901-R5





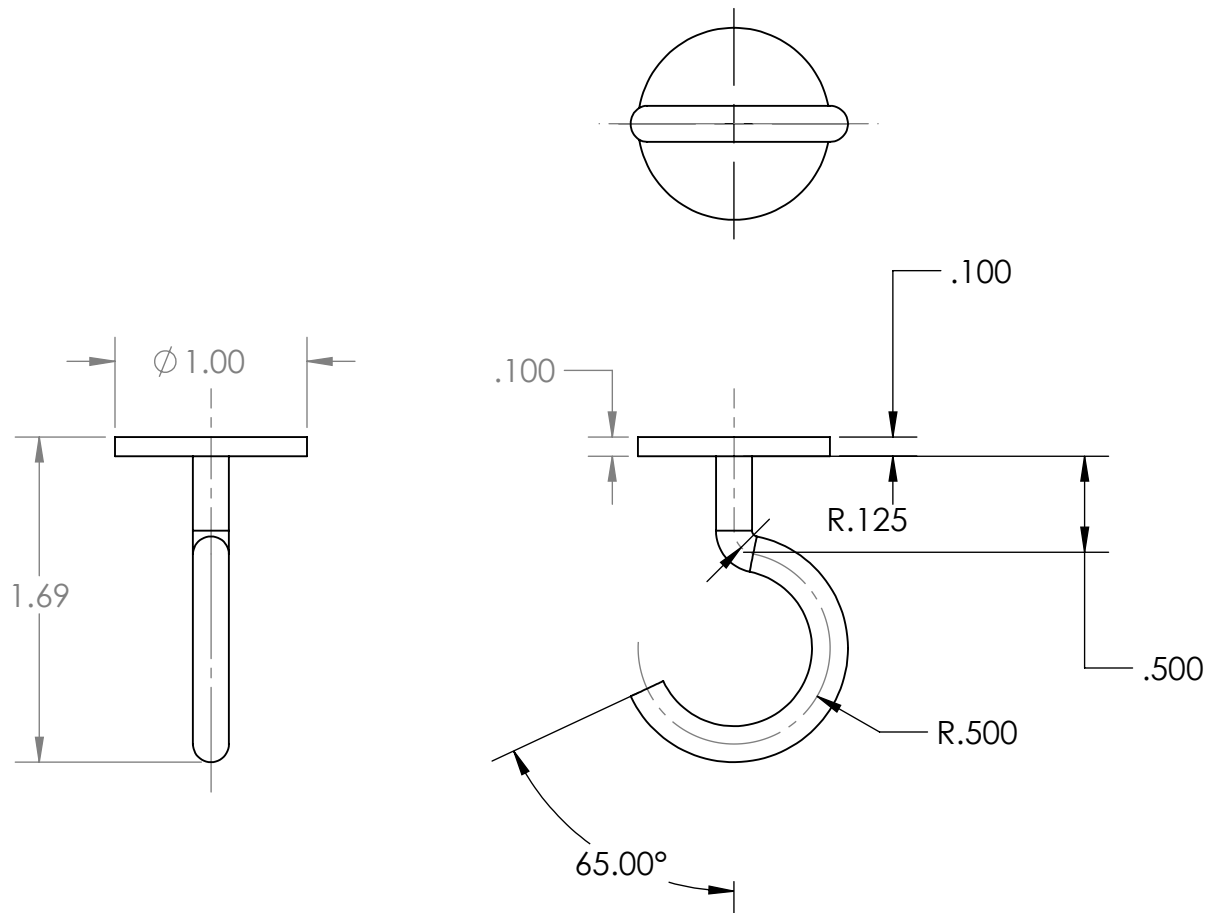
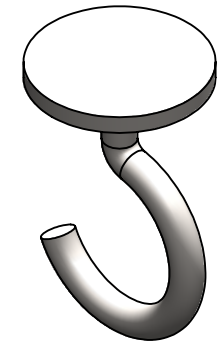
Material: PVC 0.007 Plasticized	Heat/Treat: NR	Finish: TBD	Eng. Initial: TBD	Date: 2012-12-27	Part Name: PVC End Caps
	Customer No: X	Customer Ref: TBD	Qty: 4	Scale: 1:1	Part No: 101-05-902
GLI Approval Comments: TBD	GLI Initials: TBD	GLI Date: 2012-12-27	Sheet No: 6	No. of Sheets: 8	Drawing No: 101-05-902-R5





Material: ABS	Heat/Treat: NR	Finish: TBD	Eng. Initial: TBD	Date: 2012-12-27	Part Name: FPH-Center Plate-R5
	Customer No: X	Customer Ref: TBD	Qty: 4	Scale: 1:1	Part No: 101-05-600-R5
GLI Approval Comments: TBD	GLI Initials: TBD	GLI Date: 2012-12-27	Sheet No: 7	No. of Sheets: 8	Drawing No: 101-05-600-R5





Material: AISI 1020	Heat/Treat: NR	Finish: TBD	Eng. Initial: TBD	Date: 2012-12-27	Part Name: FPH-Hook-R5
	Customer No: X	Customer Ref: TBD	Qty: 4	Scale: 1:1	Part No: 101-05-900
GLI Approval Comments: TBD	GLI Initials: TBD	GLI Date: 2012-12-27	Sheet No: 8	No. of Sheets: 8	Drawing No: 101-05-900-R5

